

2026

Utah Section PGA

**GOLF PASS**



**UTAH**

**Benefiting the Utah Junior Golf Foundation**

[UTAHPGA.COM](http://UTAHPGA.COM)

**SAMPLE**

# 2026

## UTAH PGA GOLF PASS

Benefiting the Utah Junior  
Golf Foundation

---



## UTAH

---

801-566-1005  
[utahpga.com](http://utahpga.com)

**THIS UTAH PGA GOLF PASS BELONGS TO:**

NAME: \_\_\_\_\_

ADDRESS: \_\_\_\_\_

CITY: \_\_\_\_\_ STATE: \_\_\_\_\_ ZIP: \_\_\_\_\_

PHONE: \_\_\_\_\_

This book is non-transferable. You will be required to show proper identification prior to playing. This UTAH PGA GOLF PASS is valid until December 31, 2026. All play is on a space available basis. As a GOLF PASS owner, you MUST do the following:

1. Follow the instructions posted at each facility.
2. Identify yourself as a UTAH PGA GOLF PASS holder when making your tee time.
3. Show identification at the facility.

This Utah PGA GOLF PASS will only be accepted with signatures from the Golf Pass owner.

\_\_\_\_\_  
GOLF PASS OWNER  
(SIGNATURE)

Pass is invalid unless signed and a photo ID is presented at the time of use.

1. All GOLF PASS Member benefits are printed in your booklet.
2. The number of rounds available is indicated next to each course listing. These are indicated by boxes which the golf course will mark each time you use your Golf Pass at the facility.
3. Proper golf attire is always required and will be enforced by the club. Please ask what the appropriate attire is when calling for your tee time. (Courses with specific dress codes are listed in the booklet.)
4. Coolers will not be permitted.
5. Please observe club rules and etiquette at all times.

The Utah PGA Junior Golf Foundation disclaims all liability for damages or loss of property or injury to person from any cause whatsoever. The Utah Section PGA disclaims all warranty as to merchantability and fitness for purposes intended or implied. AVAILABILITY OF FACILITIES, DATES, TIMES OF PLAY, AND PRICES ARE SUBJECT TO CHANGE WITHOUT NOTICE. Customer acknowledgment of compliance with all rules and regulations of facility is mandatory in that privileges may be withdrawn for non-compliance. For your own protection member information on page one must be completed prior to use of your GOLF PASS booklet. To prevent use of stolen booklet courses are instructed to confiscate any booklet where signatures or other identification do not match.

**BOOKLETS THAT ARE STOLEN, LOST,  
OR DAMAGED WILL NOT BE REPLACED.**

## THE UTAH SECTION PGA

The Utah PGA Junior Golf Foundation is committed to the promotion and education of junior golf in Utah. The

Utah PGA Junior Golf Foundation helps sponsor such events as the High School State Golf Championship, the All-State Banquet, Clubs for Kids, Junior Clinics, Golf Schools, and many other programs. All proceeds from the sale of the Utah PGA Golf Pass go to the Utah PGA Junior Golf Foundation. We thank you for supporting the growth of the game through your purchase.

The Utah Section is one of 50 sections that make up the Professional Golfers' Association of America. The National body consists of over 10,000 members and associates, some 360 of whom make up the Utah Section.

Their mission is to promote the enjoyment and involvement in the game of golf and to contribute to its growth by providing services to the industry. To be a leader in the promotion of golf, promoter of job opportunities for its members and apprentices, a leader in teaching and tournament operations and a trainer of future golf professionals and other career positions. To be a strong, valuable and prominent organization to the community which provides its members the programs, facilities, and professional atmosphere in which they can serve golf and the mission of PGA of America.



UTAH

# TABLE OF CONTENTS

## FREE GREEN FEE

Sunbrook Golf Club (St. George)	8, 39
---------------------------------	-------

## LOGAN, CACHE VALLEY, NORTH

Logan River (Logan)	22, 30
Purple Sage Golf Course (WY)	30

## DAVIS AND WEBER COUNTY

Barn Golf Club (Ogden)	11
Bountiful Ridge (Bountiful)	45
Crane Field (Clinton)	14, 45
Davis Park (Kaysville)	15
Eagle Lake (Roy)	16, 46
Eagle Mountain (Brigham City)	16, 46
El Monte (Ogden)	17, 47
Glen Eagle (Syracuse)	19
Lakeside (West Bountiful)	21
Mt. Ogden (Ogden)	26, 50, 57
Remuda (Farr West)	31
Schneider's Golf Course (West Point)	34, 51
Schneider's Golf Course (Hendale)	35
Sun Hills (Layton)	40
Valley View (Layton)	43

## CACHE VALLEY AND EAST

Joseph (Roosevelt)	33
Sage Hollow (Midway)	37

## TABLE OF CONTENTS

### SALT LAKE CITY AREA

Bonneville (SLC)	11
Fore Lakes (Taylorsville)	17, 47
Forest Dale (SLC)	18
Glendale (SLC)	19
Glenmoor (South Jordan)	20, 47
Golf the Round (SLC)	47
Meadow Brook (SLC)	3, 49
Mick Riley (Murray)	24
Mountain Dell (SLC)	25
Murray Parkway (Murray)	26
Nibley Park (SLC)	28
Old Mill (SLC)	28
Rose Park (SLC)	33
Riverbend (Riverton)	32, 50
River Oaks (Sandy)	36
Schneider's Pebblebrook (Sandy)	35, 51, 57
South Mountain (Murray)	38, 52

Check out our Junior Golf Section Pages 44-55

Check out our Lesson Section Pages 56-57



UTAH



# TABLE OF CONTENTS

## ST. GEORGE AREA, AZ

Cedar Ridge (Cedar City)	13
Coral Canyon (St. George)	14
Dixie Red Hills (St. George)	15
The Ledges (St. George)	22
Sand Hollow (St. George)	
Sky Mountain (Hurricane)	52
Southgate (St. George)	37
St. George Golf Club (St. George)	38
Sunbrook (St. George)	39

## TOOELE AND WEST

Oquirrh Hills (Tooele)	29
Stansbury Park (Stansbury)	39
Toana Vista (Wendover)	41

## UTAH COUNTY AND SOUTH

Canyon Hills (Nephi)	12
Carbon CC (Helper)	12
Cove View, Richfield U	14
Fox Hollow	18
Moab (Moab)	24
Palisade (Stirling)	29
The Ranches (Cannon Mtn)	31
Sleeping Ute (Cannon)	36
Inset View (Delta)	40, 53
Longview (Panguitch Springs)	41, 53
The Giving Point (Lehi)	42, 55
Timpani (Provo)	42

# Feature Course



## OFFERS YOU A FREE 18-HOLE ROUND OF GOLF

Monday - Thursday ALL DAY  
6/1/2025 - 5/30/2026

\*Carts are required at a rate of \$24 per player.  
RESERVATIONS MUST BE MADE 14 DAYS IN ADVANCE

CALL US AT 435.627.4400  
TO MAKE YOUR RESERVATION TODAY

VISIT OUR WEBSITE FOR MORE INFORMATION:

SGCITY.ORG

OFFER VOID WHEN BOX IS MARKED.



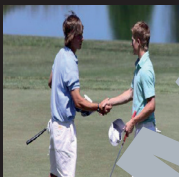
All proceeds from the Utah PGA Golf Pass  
support junior golf programs in Utah like the  
Utah PGA Junior Series, High School Golf,  
Clubs for Kid and many more.

*Thank you for your purchase!*

**2026 Utah PGA Golf Pass**



Utah PGA Junior Series  
Programs for kids 5-18



801.566.1005

[utahpga.com](http://utahpga.com)



**Scan Here**  
for more information



## 1 Free **Swing Assessment** (\$200 value)

Includes:

- 1 TPI Screen
- 3D Swing Analysis
- Data Driven Practice/Fitness Plan

Available at all Utah locations with the exception of Morgan, West Haven, and Kaysville locations. Contact individual location to redeem.



### The Barn Golf Course

**Kory Woodland - PGA Professional**

305 West Pleasant View

Ogden, UT 84404

801-782-7320

Par-71 | Yardage-6037 | Slope-105 | Rating-68



**18 holes with Cart**

**\$48**

**Good for one player.**

Valid Monday through Thursday on a time and available basis. Not valid on Friday, Saturdays or Sundays, holidays or with other promotions or groups. One redemption per visit.

### Bonneville Golf Course

**UNLIMITED**

**Lynsey Myers - PGA Professional**

954 Connor St.

Salt Lake City, UT 84108

Tee Times: 801-484-1116 | Pro Shop: 801-583-9513

Par-72 | Yardage-6824 | Slope-116 | Rating-69.6

**\$10 Off the 18 Hole Public or Senior Public Rates**

Valid for 18 holes and a cart anytime on Mondays and Tuesdays. The offer is valid for one pass holder and up to three guests. All players must ride in a cart with a valid occupancy. The pass holder must show their passbook at check-in. This offer cannot be redeemed on observed holidays or during tournament league play, and it is not valid with any other discount.

**Canyon Hills Golf Course**  
**Mike Booth -PGA Professional**

445 Golf Course Road

Nephi, UT 84648

435-623-9930

Par-36 | Yardage-6990 | Slope-135 | Rating-72.4



**Good for one player. 9 Holes with a cart for \$2**

Valid Monday through Thursday. NOT valid Friday, Saturday, Sunday, on holidays, or with tournaments or other promotions, or groups.

**SPIKELESS FACILITY**

---

**Carbon County Golf Course**

**Tom King - PGA Professional**

3055 North Hwy 50-6

Helper, UT 84526

435-637-2700

Par-70 | Yardage-6800 | Slope-119 | Rating-68.7



**Play 18 holes with a cart for \$30.00 per person.**

Valid Monday through Friday any time, Saturday or Sunday after 2:00 p.m. NOT valid on holidays or with any other promotions.

### Cedar Ridge Golf Course

Jared Barnes - PGA Professional

200 East 900 North  
Cedar City, UT 84720  
435-586-2970  
Par-71 | Yardage-6635



**Purchase one 9 or 18-hole green fee at regular price  
and receive the second 9 or 18-hole green fee FREE.  
Must have two players. Cart are MANDATORY.**

Valid Sunday through Wednesday after 12:00. Not valid on Thursday,  
Friday or Saturday. NOT valid on holiday tournaments or with other  
promotions or groups.

---

### Coral Canyon Golf Club

**UNLIMITED**

Marco Leoni - PGA General Manager

1925 North Canyon Greens Dr.  
Washington, UT 84780  
435-688-1700  
coralcanyon.com  
Par-72 | Yardage-6140 | Slope-148 | Rating-75.2

**anytime June-August and December-January  
Includes 18 holes, cart, range balls, and lunch.  
Drinks not included.**

VALID FOR GOLF PASS OWNERS ONLY. NOT valid on holidays,  
tournaments or with other promotions or groups.

**SPIKELESS FACILITY - DRESS CODE IN EFFECT**

### Cove View Golf Course

Todd Mullen - PGA Professional

1315 West 1800 South

Richfield, UT 84701

435-896-9987

Par-72 | Yardage-6600 | Slope-125 | Rating-70.5



**Purchase one 9 or 18-hole green fee at regular price  
and receive the second 9 or 18-hole green fee FREE.  
Must have two players. CARTS ARE MANDATORY.**

Valid Monday through Thursday on a times available basis. Not valid  
on Sunday after 1:00pm. NOT valid on Friday & Saturday, holidays or  
with other promotions passes or groups.

SPIKELESS FACILITY DRESS CODE IN EFFECT

---

### Crane Field Golf Course

3648 West CraneField Rd. (Highway 12 N)

Clinton, UT 84015

801-779-3800

(North Davis County)

cranefield.com

Par-72 | Yardage-6400 | Slope-117 | Rating-68.6



**18 Holes with cart \$20  
Good for one player only.**

Valid Monday through Friday . Tee Time Reservation Required. Not  
valid on Saturdays, Sundays, on holidays, tournaments or with other  
promotions or groups. No Rain checks.



**Davis Park Golf Course**  
**Zach Johnson - PGA Professional**  
1074 East Nichols Road  
Fruit Heights, UT 84037  
801-544-0401  
Par-71 | Yardage-6472 | Slope-117 | Rating-69.3

**Purchase one regular priced green fee online  
and receive a FREE cart.**

**Good for three uses for 18 hole carts.** ☐ ☐ ☐

**Good for three uses for 9 hole carts.** ☐ ☐ ☐

Valid Monday-Thursday anytime, and Saturday before 2:00pm.  
Not valid on Holidays, tournaments, other promotions or groups.  
Player must show book to redeem.

**SPIKELESS FACILITY**

**Dixie Red Hills Golf Course**  
**Aaron Brown - PGA Professional**  
1250 North 400 West  
St. George, UT 84770  
801-435-6274  
Par-34 | Yardage-2720 | Slope-118 | Rating-65.5  
On-Line Tee Time [dixiecity.org](http://dixiecity.org)



**GREEN FEE SPECIAL**

**\$20 Player (green fee & cart) 6/1/26-8/31/26**

**Valid Monday through Sunday.**

**SPIKELESS FACILITY**

**Eagle Lake Golf Course**

**Eric Bumstead - PGA Professional**

2885 West 5200 South

Roy, UT 84067

801-825-3467

Par-30 | Yardage-2500 | Slope-118 | Rating-28.6



**Purchase one 9-hole green fee @ regular price and  
receive a second 9-hole green fee FREE.  
Must have two players. Carts are optional.**

Valid Monday through Thursday on a times available basis. NOT valid  
on Fridays, Saturdays, Sundays, holidays or with other promotions or  
groups.

SPIKELESS FACILITY

**Eagle Mountain Golf Course**

**Chris Marx - PGA Professional**

960 East 700 South

Brigham City, UT 84302

435-723-3211

Par-71 | Yardage-6769 | Slope-113 | Rating-68.1



**Good for ONE Player, 18 holes with Cart.  
Cost \$40**

Valid Monday through Thursday on a times available basis. NOT valid  
on Fridays, Saturdays, Sundays, holidays or with other promotions or  
groups.

SPIKELESS FACILITY

### El Monte Golf Course

**UNLIMITED**

**Todd Brenkman - PGA Professional**

1300 Valley Drive

Ogden, UT 84401

801-629-0694

Par-35 | Yardage-3009 | Slope-111 | Rating-67.7

**9-Hole Green Fee with a cart \$25**

**18-Hole Green Fee with a cart \$50**

Valid Monday, Tuesday & Thursday. Not valid on Wednesday, Friday, Saturday & Sunday. NOT valid on holidays or with other promotions or groups. Valid for Golf Pass owner only.

SPIKELESS FACILITY

---

### Fore Lakes Golf Course

**Jason Asplund - PGA Professional**



1285 West 4700 South

Taylorsville, UT

(801) 266-8600

forelakesgc.com

Par-58 | Yardage-5740 | Slope-96 | Rating-61.6

**Purchase one 9-hole green fee at the regular price**

**and receive the second 9-hole green fee**

**FREE. Must have two players.**

**CARTS ARE MANDATORY.**

Valid Monday - Thursday 9:00am - 3:00pm. NOT valid on Friday - Sunday, on holidays, tournaments, league play or with any other promotions or groups.

SPIKELESS FACILITY

**Forest Dale Golf Course**  
**Gina Varni**

**UNLIMITED**

2375 South 900 East  
Salt Lake City, UT 84106  
Tee Times: 801-484-3333 | Pro Shop: 801-483-5420  
Par-36 | Yardage-2621 | Slope-101 | Rating-67.5

**\$5 off the 9-Hole Public or Senior Public rate**

Valid for 9 holes and a cart between 11:00 a.m. and 3:00 p.m. on Wednesdays and Thursdays. The offer is valid for pass holder and up to three guests. All players must use a cart with double occupancy. The pass holder will need to show their passbook at check-in. This offer cannot be redeemed on observed holidays or during tournament or league play. Offer is not valid with any other discount.

**Fox Hollow Golf Club**

1400 North 200 East  
American Fork, UT 84003  
801-756-3500  
Par-72 | Yardage-7000 | Slope-128 | Rating-73.3



**Purchase a 9 or 18-hole green fee at the regular price and receive the second 9 or 18-hole green fee FREE. Must have two players. Cart are MANDATORY.**

Valid Monday through Friday all day. Also valid Saturday and Sunday all day. Not valid on holidays, tournaments or with other promotions or groups. Offer valid for golf pass owner ONLY.

## Glendale Golf Course

**UNLIMITED**

**Chris Richards - PGA Professional**

1630 West 2100

South Salt Lake, UT 84119

Tee Times: 801-484-3333 | Pro Shop: 801-974-2403

Par-72 | Yardage-6939 | Slope-114 | Rating-69.3

**\$10 off the 18-hole Public or Senior rate**

**or**

**\$5 off the 9-hole Public or Senior Public**

Valid for 9 or 18 holes and a cart anytime Monday through Wednesday. The offer is valid for the passholder and up to three guests. All players must ride in a cart with double occupancy. The passholder must show their passbook at check-in. This offer cannot be redeemed on observed holidays or during tournament or league play, and it is not valid with any other discount.

**SPIKELESS GOLF**

## Glen Eagle Golf Course

**Michael Garrison - PGA Professional**

3176 West 1700 South

Syracuse, UT 84075

801-773-GOLF(4653)

Par-72 | Yardage-6939 | Slope-114 | Rating-69.3



**Get ONE player, 18 holes with cart.**

**Cost \$44**

Valid Monday through Thursday all day, except holidays, tournament or with other promotions or group rates. Valid Friday-Sunday after 1:00PM ONLY. Valid for one use per visit.

## TAYLORMADE TUESDAY

**Receive 1 sleeve of TPS/TPSX or Tour Response golf balls when you play on Tuesday and receive a free fountain or bottled drink and raffle ticket to win a grand prize to be given away at the end of the season.**

**One drink & raffle ticket per person, per Tuesday;  
alcohol excluded from free drink offer**

## Glenmoor Golf Club

### Darci Olsen -PGA Professional

9800 South 4800 West

South Jordan, UT 84809

801-280-1742

Par-72 | Yardage-6800 | Slope-127 | Rating-73

**Purchase one regular priced green fee and receive a free cart.**

Pre-pay online for GREEN FEE only. Present your Golf Pass at the golf shop when you check-in for your free cart. We will not be able to issue a refund if you pre-pay for cart online. Valid Monday through Thursday. Only valid for Utah PGA Golf Pass holders. Not valid for tournaments, tournaments, or other promotions. Must book GREEN FEE online and pre-pay at [golfglenmoor.com](http://golfglenmoor.com). Player must show Utah PGA Golf Pass at time of check-in to redeem. Must book GREEN FEE

**Good for four uses for 1 hole cart.**

☐☐☐☐

**Good for four uses for 2 hole carts.**

☐☐☐☐

**50% off 1 hr Tracking Bay rentals**

Must book and PRE-PAY online and present golf pass at check-in.

☐☐☐☐☐☐☐☐

**50% off 1 hr indoor driving range rental**

Must book and PRE-PAY online and present golf pass at check-in.

☐☐☐☐☐☐☐☐

[golfglenmoor.com](http://golfglenmoor.com)

Indoor center offers are valid Monday through Thursday ANYTIME.

### Golf the Round

Christian Scott - PGA Professional

600 West 3300 South  
Salt Lake City, UT 84119  
801-973-2345

Par-33 | Yardage-2700 | Slope-87 | Rating-59.1



Purchase one 9-hole green fee at the regular price  
and receive the second 9-hole green fee FREE.

Must have two players. CARTS ARE MANAGED FOR YOU.

Valid Monday through Thursday 10am - 2pm. NOT valid on Friday, Saturday, Sunday, holidays or with other promotions or groups. (4 uses)



Purchase one large bucket of orange balls get a  
medium bucket of orange balls FREE.

Must use both buckets in the same round. Valid Mon-Thurs. anytime

---

### Lakeside Golf Course

Dallas Green - PGA Professional

1201 North 1100 West  
West Bountiful, UT 84061  
801-295-1019

lakesidegolf.com

Par-71 | Yardage-6500 | Slope-113 | Rating-67.2

**UNLIMITED**

18 Holes and Cart Offer:  
\$40 Monday - Thursday ANYTIME  
\$50 Friday - Sunday AFTER 2pm

18 Holes and Cart Offer:  
\$40 Monday - Thursday ANYTIME  
\$50 Friday - Sunday AFTER 2pm

NOT VALID ON HOLIDAYS, WITH TOURNAMENT, LEAGUE PLAY OR WITH OTHER DISCOUNTS FOR GROUPS. TEE TIMES CAN BE MADE SIX DAYS IN ADVANCE.

GOOD FOR ONE PLAYER.

SPIKELESS FACILITY - DRESS CODE IN EFFECT  
SHOES AND SHIRT ARE REQUIRED

## The Ledges

**Chad Pettingill, General Manager**

1585 Ledges Parkway

St. George, UT 84770

435-634-4640

Par-72 | Yardage-7145 | Slope-127 | Rating-72.7



## \$50 Unlimited after 2pm

Includes unlimited golf, a day of play,  
cart, & range balls.

Valid June 1 - August 30, 2026.  
Not valid with other offers.

## Logan River Golf Course

**Jeffery Johnson, PGA Professional**

550 West 1000 South

Logan, UT 84301

888-750-0123

Par-71 | Yardage-6800 | Slope-119 | Rating-68.3

## UNLIMITED

Purchase two 9-18 hole green fees at the adult price  
and a cart for Free. Must have two players.

Valid Monday through Thursday before 9:00A.M. Also valid Sundays  
after 2:00P.M. NOT valid on Fridays, Saturdays, holidays, tournaments or  
with other promotions or groups.

SPIKELESS FACILITY - DRESS CODE IN EFFECT



**Meadow Brook Golf Course  
Troy Watkins - PGA Professional**

**UNLIMITED**

4197 South 1300 West  
Salt Lake City, UT 84123  
385-468-1500

Par-72 | Yardage-6800 | Slope-120 | Rating-70.9

**18 Holes with cart  
\$44 for Seniors (60+ years old)**

**\$48 Regular**

Valid Monday - Friday

**18 holes with cart \$50 for all players**

Valid Saturday and Sunday after 1:00 PM

One PGA Pass good for one, two, three, or four players playing in the same foursome. Not valid on holidays, tournaments, or for ladies leagues or with any other promotional events or specials.

Pass holder will be required to show signed golf pass with valid ID.

NOT valid for 9 hole play. Rain-checks will not be issued in conjunction with this promotion.

SPIKELESS FACILITY - DRUG CODE IN EFFECT

---

**“Golf is a compromise between  
what your ego wants you to do,  
what experience tells you to  
do, and what your nerves let  
you do.”**

**-Bruce Crampton**

## Mick Riley Golf Course

Adam T. Johnson - PGA Professional

421 East Vine St.

Murray, UT 84107

385-468-1400

Par-36 | Yardage-3280 | Slope-109 | Rating-69.6

### Regulation 9: Limited to 8 PUNCHES

RESERVATIONS MUST BE BOOKED BY PHONE OR IN PERSON. NO  
REFUNDS OR CHANGES WILL BE ISSUED IF BOOKED ONLINE.

Golf Pass is valid for up to 4 players each visit. Each player can play 9 holes with cart for only \$18, including golf cart rental; cart rental is mandatory with this promotion. Valid Mon.-Thurs. all day, also valid Saturday and Sunday after 3:00pm. NOT valid on Friday or holidays; NOT valid with tournaments, corporate events, or with other promotions or groups. NOT valid for League Play. Applies to regular rates only, does not apply to Senior or Junior rates. Tee times can be made up to 7 days in advance by calling the golf course. Pass holder will be required to show signed Golf Pass with valid ID.



### Par 3: Limited to 8 PUNCHES

RESERVATIONS MUST BE BOOKED BY PHONE OR IN PERSON. NO  
REFUNDS OR CHANGES WILL BE ISSUED IF BOOKED ONLINE.

Golf Pass is valid for up to 4 players each visit. Each player can play 9 holes with cart for only \$18, including golf cart rental; cart rental is mandatory with this promotion. Valid Mon.-Thurs. all day, also valid Saturday and Sunday after 3:00pm. NOT valid on Friday or holidays; NOT valid with tournaments, corporate events, or with other promotions or groups. NOT valid for League Play. Applies to regular rates only, does not apply to Senior or Junior rates. Tee times can be made up to 7 days in advance by calling the golf course. Pass holder will be required to show signed Golf Pass with valid ID.



SPIKELESS FACILITY - DRESS CODE IN EFFECT

## Moab Golf Course

Robert Johnson - PGA Professional

2705 S.E. Bell Road

Moab, UT 84501

435-259-6488

Par-72 | Yardage-6500 | Slope-122 | Rating-69.8



**Green Fee Special: 18 Holes with a cart for \$49 + tax**  
**Not valid for 9 hole play.**

Valid 5 days a week during the months of January, February, March, June, July, and August, November and December. Also valid Tuesday-Thursday during the months of April, May, September and October. NOT valid on holidays, tournaments or with other promotions or groups. Tee times can be made 30 days in advance.

SPIKELESS FACILITY - DRESS CODE IN EFFECT

**Mountain Dell Golf Course**  
**Jeremy Green - PGA Professional**

**UNLIMITED**

Parley's Canyon

Salt Lake City, UT 84109

Tee Times: 801-484-3333 | Pro Shop: 801-582-3812

Par-72/71 | Slope-116/125 | Rating-68/69.7

**\$10 off the 18-hole Public or Senior Public rates**

Valid for 18 holes and a cart anytime on Mondays and Tuesdays. The offer is valid for the pass holder and up to three guests. All players must ride in a cart with double occupancy. The pass holder must show the passbook at check-in. This offer cannot be redeemed on selected holidays or during tournament or league play, and does not validate any other discount.

**Mountain View Golf Course**  
**Mark Owen -PGA Professional**

**UNLIMITED**

2400 West 8660 South

West Jordan, UT 84088

385-468-1400

Par-72 | Yardage-6500 | Slope-108 | Rating-67.9

**18 Holes with Cart Only \$45 per player**

Monday - Thursday until 3:00PM. Friday-Sunday after 1:00PM

Good for one, Two, Three, OR Four Players. Not valid on holidays, tournaments or with other promotions or groups. Not valid with senior discounts (senior rates/regular rates only). Not valid with mens or ladies leagues. Tee times can be made seven days in advance by phone or going to [montygolf.com](http://montygolf.com). Pass holder will be required to show signed Golf Pass with ID.

## Mt. Ogden Golf Course

**UNLIMITED**

**Todd Brenkman - PGA Professional**

1787 Constitution Way

Ogden, UT 84403

801-629-0699

Par-71 | Yardage-6294 | Slope-129 | Rating-69.6

### 18-Hole Green Fee with a cart \$50

Valid Monday - Thursday only. Only valid for golf pass owners. NOT valid on weekends, holidays, tournaments or with other promotional for groups.

SPIKELESS SHOES ONLY

## Murray Parkways Golf Club

**John Pearson - PGA Professional**

6345 South Murray Parkway

Murray, UT 84111

801-262-4000

Par-72 | Yardage-6880 | Slope-116 | Rating-69.2



### Green Fee Special:

18 holes with cart only \$50, Senior \$44 (60+)

Valid Monday - Thursday open to 3:00p.m.

Not valid on Friday, Saturday, Sunday or holidays,

with group outings or other discounts.

## Nibley Park Golf Course

**UNLIMITED**

Andrew Mecham - PGA Professional

2780 South 700 East

Salt Lake City, UT 84116

Tee Times: 801-484-3333 | Pro Shop: 801-483-5418

Par-34 | Yardage-2682 | Slope-115 | Rating-65

### \$5 off the 9-hole Public or Senior Public Rate

Valid for 9 holes and a cart between 11:00 a.m. and 3:00 p.m. Monday through Wednesday from May-September 2019. All players must ride in a cart with double occupancy. Offer good for the pass holder and up to three guests. Pass holder will need to show their passbook on the green. The offer is not valid on observed holidays or during tournament or league play.

---

## Old Mill Golf Course

**UNLIMITED**

Wade Olsen - PGA Professional

6080 Wasatch Blvd.

Salt Lake City, UT 84121

385-468-1440

Par-71 | Yardage-6400 | Slope-124 | Rating-69.8

### 18 Hole Green Fee with Cart \$55 per player (\$48 Senior)

Maximum of four players per Golf Pass Book.

Valid Monday-Wednesday all day. Not valid on holidays, with tournaments, corporate or league play or with other promotions. Not valid for nine hole or short courses. Passes cannot be issued in conjunction with this promotion. Tee times can be made several days in advance by calling 385-468-1440 or online at [www.slccountygolf.com](http://www.slccountygolf.com) or on the Chronogolf app. Pass holders will be required to show their signed golf pass with valid I.D.

SPIKELESS FACILITY

**Oquirrh Hills Golf Course**  
**Cody Lopez - PGA Professional**  
1255 East Vine Street  
Tooele, UT 84074  
435-882-4220  
Par-72 | Yardage-6611

**UNLIMITED**

Receive 18 holes with cart for two players for \$80  
Receive 9 holes with cart for two players for \$40

Tee times can be made 7 days in advance at thehillsgolf.com

Valid Monday through Thursday all day. Not valid on weekends, holidays or with other promotions or groups.

SPIKELESS FACILITY

**Palisade Golf Course**  
**Jordan VanOrman - PGA Professional**  
2200 Palisade Road  
Sterling, UT 84665  
435-835-4666  
Par-72 | Yardage-6811 | Slope-112 | Rating-68.7



Purchase one 9 or 18 hole green fee at the regular price and receive the second 9 or 18 hole green fee for \$10. Must have two players. Carts are mandatory.

Valid Monday through Thursday after 1:00pm. NOT valid on Friday or Saturday, on holidays or with other promotions, passes or groups.

#EXPERIENCEPALISADE

**Purple Sage Golf Course**  
**Scott Ehlers - PGA Professional**  
401 Kindler Drive  
Evanston, WY 82930  
307-789-2383  
Par-72 | Yardage-7000 | Slope-124 | Rating-71.5

**UNLIMITED**

Purchase one 9 or 18-hole green fee at the regular price and receive the second 9 or 18-hole green fee FREE. Must have two players. Caddies are OPTIONAL.

Valid any day of the week. NOT valid on holidays, special events or with other promotions or groups

SPIKELLS GOLF COURSE

---

"Golf is a long  
walk with a putter."  
-Greg Norman

**The Ranches Golf Course**  
**Mason Christison - PGA Professional**  
4128 East Club House Lane  
Eagle Mtn., UT 84005  
801-789-8100  
theranchesgolfclub.com  
Par-72 | Yardage-6522 | Slope-121 | Rating-70.6

**Purchase one regular priced green fee online and receive a free cart.**

Pre-pay online for GREEN FEE only. Present your Golf Pass at the golf shop when you check-in for your free cart. We will not be able to issue a refund if you pre-pay for cart. Valid Monday - Thursday. Only valid for Utah PGA Golf Pass holder. Not valid on holidays, tournaments, or other promotional periods. Player must show Utah PGA Golf Pass at time of check-in. Must book GREEN FEE online and pre-pay at **TheRanchesGolfClub.com**

**Good for FIVE uses for 1-hole carts.** ☐☐☐☐☐

**Good for FIVE uses for 9-hole carts.** ☐☐☐☐☐

**TheRanchesGolfClub.com**

---

**Remuda Golf Course**  
**2600 West 300 North**  
Farmington, UT 84402  
801-720-7200  
remudagolf.com  
Par-72 | Yardage-6402 | Slope-110 | Rating-68.4

☐☐☐☐

**One GREEN medium range bucket with paid 18-hole round.**

Valid any day with regular priced 18-hole green fee. May not be combined with others discount.



**Riverbend Golf Course**  
**Steve Young - PGA Professional**  
12765 South 1040 West  
Riverton, UT 84065  
385-468-1460  
Par-72 | Yardage-6876 | Slope-119 | Rating-69

**UNLIMITED**

Each player can play 18 holes with cart only \$50,  
including golf cart rental; cart rental is mandatory  
with this promotion.

Valid for up to 2 players EACH visit. Valid Monday through Sunday all day, also valid Saturday and Sunday after 2:00pm. NOT valid on Friday or holidays; NOT valid with tournament, corporate events, or with other promotions or discounts.

Applies to regular rates only, does not apply to senior or junior rates. NOT valid for nine hole play. Tee times can be made seven days in advance by calling the golf course or online at [www.sandycountygolf.com](http://www.sandycountygolf.com)

Pass holder will be required to show signed Golf Pass with valid ID.

SPIKELESS FACILITY - DRUG CODE IN EFFECT

**River Oaks Golf Course**  
**Mitch Stone - Golf Course Manager**  
**Matthew Stone - PGA Professional**  
9300 South 1040 West  
Sandy, UT 84070  
801-568-4653  
Par-70 | Yardage-6876 | Slope-131 | Rating-70.4

**UNLIMITED**

18-holes with a cart \$59 regular (Seniors \$52)

Monday - Thursday any time. Also valid Saturday and Sunday after 1:00pm. NOT valid for tournament use. Not valid on holidays.

[sandy.utah.gov/golf](http://sandy.utah.gov/golf)

## Rose Park Golf Course

### Ronnie Newren - PGA Professional

1386 N. Redwood Rd

Salt Lake City, UT 84116

Tee Times (801) 484-3333 | Pro Shop (801) 596-5030

Par-72 | Yardage-6,696 | Slope-105 | Rating-67.7

**\$10 off the 18-hole Public or Senior Public Rate**

or

**\$5 off the 9-hole Public or Senior Public Rate**



Valid for 9 or 18 holes and cart anytime Monday-Friday. The offer is valid for the pass holder and up to three guests. All players must ride in a cart with double occupancy. The pass holder will need to show their passbook at check-in. This offer cannot be combined on observed holidays or during tournament or league play, and it is not valid with any other discount.

## Roosevelt Golf Course

1155 Clubhouse Drive

Roosevelt, UT 84066

435-722-9111

Par-72 | Yardage-6,711 | Slope-123 | Rating-72.6



**Monday - Friday**  
**18 holes with a cart for \$30**

**Saturday - Sunday after 1:00PM**  
**18 holes with a cart for \$30**

**Not valid on holidays**

### Sand Hollow Golf Course

**UNLIMITED**

Adam Jasperson - PGA Professional

5662 W Clubhouse Drive

Hurricane, UT 84737

435-656-4653

Par-72 | Yardage-6893 | Slope-133 | Rating-71.9

### 9-Hole Re-Round - Links Course \$

Valid for one (1) same-day 9-hole re-round on the **Links Course** only. Must be used on the same calendar day as the first round played. Subject to tee time availability. Cannot combine with other discounts or offers.

SPIKELESS FACILITY GREEN FEE IN EFFECT

---

### Schneider's Bluff Golf Course

Jon Schneider - PGA Professional



300 North 3500 West

West Point, UT 84015

801-773-0731

Par-72 | Yardage-6209 | Slope-110 | Rating-67.3

### Re-Round Green Fee Special

Re-round 18 holes with a cart for \$44

Valid Monday through Thursday all day. Also valid Fridays, Saturday and Sunday after 1:00 p.m. NOT valid on holidays, tournaments or other special occasions or groups. Tee times can be made one day in advance. Only valid for 1 golfer playing 18 holes per visit.

### "Bluff Short Course"



BUY ONE SHORT COURSE GREEN FEE, GET ONE FREE.

MUST HAVE 2 PLAYERS.

**Schneider's Pebblebrook Golf Course**

**Gary Schneider - PGA Professional**

8969 South 1300 East

Sandy, UT 84070

801-566-2181

Par-33 | Yardage-2347 | Slope-100 | Rating-63.6



**Purchase one 9-hole green fee at regular price and receive the second 9-hole green fee FREE.**  
**Must have two players. CARTS ARE MANDATORY.**

Valid Monday - Thursday on a times available basis. Not valid on Friday, Saturday, or Sunday. Not valid on holidays with other promotions or groups.

---

**Schneider's Riverdale Golf Course**

**Ernie Schneider - PGA Professional**

5460 South Weber Dr

Riverdale, UT 84405

801-399-4600

Par-71 | Yardage-2500 | Slope-114 | Rating-68.4



**Green Fee Special**  
**Receive 18-Holes with a cart for \$44**

Valid Monday through Thursday all day. Also valid on Friday, Saturday and Sunday until 1:00pm. NOT valid on holidays, tournaments or other promotions or groups. Tee times can be made one day in advance. Only valid for 1 golfer playing 18-holes per visit.

**SPIKELESS FACILITY - DRESS CODE IN EFFECT**

**Sky Mountain Golf Course**  
**Cameron Hamill - PGA Professional**

**UNLIMITED**

1030 North 2600 West  
Hurricane, UT 84737  
435-635-7888

Par-72 | Yardage-6383 | Slope-115 | Rating-69.9

**GREEN FEE SPECIALS**

All Green fee specials are good for one player. Each player must have their own PGA Golf pass. NOT valid on holidays, tournaments or with other promotions or groups.

**\$70 per player (green fee & cart)**

Valid September 1st - January 31st

**\$80 per player (green fee & cart)**

Valid February 1st - May 31st.

**\$60 per player (green fee & cart)**

Valid June 1st - August 31st

**Sleepy Ridge Golf Links**  
**Steve Marett - PGA Professional**

**UNLIMITED**

730 Sleepy Ridge Drive  
Orem, UT 84057  
801-434-GOLF (4653)

Par-72 | Yardage-7017 | Slope-123 | Rating-71.7

**18 holes with a cart for \$56 - per player**  
**Good for entire foursome.**

Valid Monday, Wednesday, Thursday & Sunday All Day. Not valid on holidays, tournaments or other promotions.

**SPIKELESS FACILITY - DRESS CODE IN EFFECT**

**Soldier Hollow Golf Course**  
**David Simm - Golf Professional**  
1370 West Soldier Hollow Drive  
Midway, UT 84049  
435-654-7442  
Gold Course Par-72 | Silver Course Par-72



**\$40 for 18 holes with a cart**  
**Good for One Player Only.**

**Golf pass holder will be required to show**  
**signed Golf Pass at check-in.**

Valid Monday and Tuesday any time after 1pm Friday-Sunday.

**SPIKELESS FACILITY DRESS CODE IN EFFECT**

**stateparks.utah.gov/soldierhollow**

**Southgate Golf Course**  
**Eron Deming - PGA Professional**  
1975 Tonaquint Dr.  
St. George, UT 84770  
Pro Shop 435-779-2700  
Par-71 | Yardage 6270 | Slope 126 | Rating-69.9



### **GREEN FEE SPECIAL**

**\$30 Per Player (green fee & cart) 12/1/25 - 5/31/2026**  
**\$45 Per Player (green fee & cart) 6/1/26 - 9/30/2026**

Monday-Thursday all day and Friday-Sunday after 2:00pm. Not valid on holiday tournaments, corporate events, league play, or with other promotions. Not valid for 9-hole play. Rainchecks will not be issued in conjunction with this promotion. To book online, please visit [slco.org/golf](https://slco.org/golf).

Pass holder will be required to show golf pass at check-in.

**DRESS CODE IN EFFECT. SPIKELESS FACILITY**

**South Mountain Golf Course**  
**Dustin Pimm - PGA Professional**

**UNLIMITED**

1247 East Mike Weir Drive  
Draper, UT 84020

385-468-1480 Tee time can be made seven days in advance.  
Par 72 | Blue Tees | Yardage-6145 | Slope 126 | Rating 68.3

**18 Hole Green Fee with Cart \$52 (junior & senior)  
(\$47 Senior)**

**Maximum of four players per golf pass  
Valid March 1 - October 31**

Valid Monday-Thursday all day and Friday through Sunday after 2:00PM. Not valid on holidays, tournaments, corporate events, league play or with other promotions. Not valid for in-hole play. Rain checks will not be issued in conjunction with a promotion. To book online, please visit [SLCO.org/golf](http://SLCO.org/golf). Pass holder will be required to show golf pass at check-in.

**DRESS CODE: GOLF. SPOKELESS FACILITY**

**St. George Golf Club**  
**James H. ... PGA Professional**



2190 South ...  
St. George, UT 84790  
435-627-4404

Par-73 | Yardage-... | Slope-114 | Rating-68.3

**GREEN FEE SPECIAL**

**50 per person (green fee & cart) 12/1/2025 - 5/31/2026**  
**25 per player (green fee & cart) 6/1/2026 - 9/30/2026**

NOT valid on holidays tournaments or with other promotions or groups

**SPIKELESS FACILITY**

**Stansbury Park Golf Course**  
**Doug Brown - PGA Professional**  
#1 Country Club Dr  
Stansbury, UT 84074  
435-882-4162  
Par-72 | Yardage-6750 | Slope-121 | Rating-69.8

**UNLIMITED**

**\$40 for 18 holes with cart**

Valid Monday through Thursday. Holidays excluded. Can be used for pass holder and up to 3 other people per day.

---

**Sunbrook Golf Course (24 Holes)**  
**Reed McArthur - PGA Professional**  
2366 Sunbrook Ave.  
St. George, UT 84202  
435-627-4400  
Par-72 | Yardage-6818 | Slope-122 | Rating-69.9



**GREEN FEE SPECIAL**

**\$75 per player (green fee & cart)**  
October - May. Valid Anytime.

**\$55 per player (green fee & cart)**  
June - Sept. Valid Anytime



**Sun Hills Golf Course**



**Christopher R. Johnson - PGA Professional**

3185 N. North Hills Dr.

Layton, UT 84041

801-771-4814 sunhillsgolf.com

Par-71 | Yardage-6508 | Slope-122 | Rating-69.9

**Good for ONE Player  
18 holes with cart \$44**

Valid Monday - Thursday. Not valid on Friday,  
Saturday, Sunday, holiday, tournaments, league play, or  
with other promotion for groups.

**Sunset View Golf Course**

**UNLIMITED**

**Casey Fowles - PGA Professional**

Delta, UT 84624

435-864-2500

Par-72 | Yardage-6500 | Slope-111 | Rating-69.7

**\$44.95 ALL DAY. Includes carts.**

**Valid Monday-Friday.**

**Purchase the 18-holes green fee at the regular price  
and receive the second 18-hole green fee FREE. Must  
have two players. Carts are optional.**

**NOT valid on holidays, tournaments or with other promotions or  
groups.**

**Talons Cove Golf Club**  
**Kareen Larson - Golf Manager**

2220 South TalonsCove Drive  
Saratoga Springs, UT 84043  
(801) 407-3030  
Par-72 | Yardage-7230 | Slope-121 | Rating-71.8

**UNLIMITED**

**18 HOLES AND CART FOR \$50**

Good for golf pass owner only. Monday-Thursday after  
11:00am. Does not include holidays. Tee times can be  
made seven days in advance.

---

**Toana Vista Golf Club**  
**Charles Clinton - PGA Professional**

2319 Pueblo Blvd.  
West Wendover, NV 89883  
775-664-4000 | 775-664-4330  
Par-72 | Yardage-6520 | Slope-128 | Rating-71.8

**UNLIMITED**

**GOLF PASS member green fee is \$60**

**Includes: range balls and golf cart.**

Tee times must be made one month in advance. May only be used for  
golf pass owner. Valid anytime Monday - Thursday. Friday - Sunday  
until 5:00pm

**SPIKELESS FACILITY - DRESS CODE IN EFFECT**

**Thanksgiving Point Golf Course**  
**Tele Wightman - PGA Professional**

3300 West Clubhouse Drive

Lehi, UT 84043

801-768-7401

thanksgivingpointgolfclub.com

Par-72 | Yardage-6784 | Slope-129 | Rating-71.7

**UNLIMITED**

**ONE 18-Hole green fee for**  
**GOLF PASS MEMBER \$65**

Valid Sunday - Thursday. Not valid on holidays, tournaments or with other promotions or groups. 10% off all golf shop merchandise.

SPIKELESS FACILITY | DRESS CODE IN EFFECT

---

**Timpanogos Golf Club**  
**Brett Watson - PGA Professional**

380 East Lakeview Parkway

Provo, UT 84606

801-852-5555

Par-72 | Yardage-6784

**UNLIMITED**

**Purchase One Green Fee at the Regular Price and**  
**Receive the Second Green Fee FREE. Must have two**  
**members. Does not include carts, however**  
**CARTS ARE MANDATORY.**

Valid Sunday through Thursday beginning March 1 - November 30. Not valid on holidays, tournaments or with other promotions or groups. Tee times can be made one week in advance.

SPIKELESS FACILITY | DRESS CODE IN EFFECT | NO ALCOHOL

**Valley View Golf Course**  
**Pete Stone - PGA Professional**

2501 Gentile Road  
Layton, UT 84040  
801-546-1630

Par-72 | Yardage-6701 | Slope-131 | Rating-71.6

**Purchase one regular priced green and receive a free cart.**

**Good for three uses for 18 hole c**

☐☐☐

**Good for three uses for 9 hole cts.**

☐☐☐

Valid Monday-Thursday anytime, Friday-Saturday after 2:00pm.  
Not valid on Holidays, tournaments or for promotions or groups.  
Player must show book to redeem.

**SPIKELESS FACILITY DRESS CODE IN EFFECT**

**“What other people may find in  
poetry or art museums, I find in  
the fight of a good drive.”**

**-Arnold Palmer**

## Junior Section



The Junior Section of the Utah PGA Golf Association is the perfect way to get your children on the golf course.

A junior golfer is 17 years of age and younger. Please check with each facility for specific rules and regulations before you arrive.

## Junior

### Bountiful Ridge Golf Course

UNLIMITED

2430 South Bountiful Blvd.

Bountiful, UT 84010

801-298-6040

Par-71 | Yardage-6523 | Slope-122 | Rating-70.2

Purchase one adult 9 or 18 hole green fee at regular price and receive a junior (age 17 and under) 9 or 18 hole green fee FREE. Must be two players. Carts are MANITOWOC.

Valid Monday, Tuesday, & Wednesday from 12:00pm - 4:00pm. NOT valid on holidays tournaments or with other promotions or groups.

SEE FEE LIST FOR DETAILS

### Crane Field Golf Course

3648 West Crane Field Rd. (North)

Clinton, UT 84015

801-779-3800

Par-72 | Yardage-6400 | Slope-117 | Rating-68.6



Purchase one adult 9-hole or 18-hole green fee at the regular price and receive one junior 9-hole or 18-hole green fee FREE.

Carts available separately and is optional. Valid Monday through Friday on a first-come, first-served basis. NOT valid on Fridays, Saturdays, Sundays, holidays or with other promotions or groups.

## Junior

### Eagle Lake Golf Course Eric Bumstead - PGA Professional

2885 West 5200 South

Roy, UT 84067

801-825-3467

Par-30 | Yardage-2500 | Slope-118 | Rating-28.6



**Purchase one adult 9-hole green fee at the regular price and receive a junior 9-hole green fee FREE.**

Must have two players. Carts are optional. Valid Monday through Thursday on a times available basis. Not valid on Fridays, Saturdays, Sundays, holidays or other special events or groups

SPIKELESS FACILITY

### Eagle Mountain Golf Course Chris Marx - PGA Professional

960 East 700 South

Brigham City, UT 84302

435-723-3217

Par-71 | Yardage-6500 | Slope-113 | Rating-68.1



**Junior play for only \$5 per 9-holes**

Monday-Thursday 11:00am-3:00pm.

Not valid on holidays or with other promotions or groups.

SPIKELESS FACILITY

## Junior

**El Monte Golf Course**  
**Todd Brenkman - PGA Professional**  
1300 Valley Drive  
Ogden, UT 84401  
801-629-0694  
Par-35 | Yardage-3009 | Slope-111 | Rating-67.7

**UNLIMITED**

**Junior plays FREE Monday-Thursday any time with one paying adult.**

Adult is responsible for green fee of \$17. Cart is optional at a fee of \$20  
**SPIKELESS FACILITY**

**Fore Lakes Golf Course**  
**Jason Asplund- PGA Professional**  
1285 West 4700 South  
Taylorsville, UT 84123  
801-266-8621  
Par-58 | Yardage-3574 | Slope-106 | Rating-61.6

**UNLIMITED**

**One Junior plays for free with one paying adult.**

Monday through Friday all day. Carts optional  
**SPIKELESS FACILITY**

**Golf the Round**  
**Christian Scott- PGA Professional**  
6500 West 3300 South  
Fore Lakes Golf Course 84119  
801-977-7445  
Par-67 | Yardage-5700 | Slope-87 | Rating-59.1

**UNLIMITED**

**Purchase one adult 9-hole green fee at the regular price and receive a junior 9-hole green fee FREE. Must have two players. Carts are optional.**

Valid Sunday through Saturday all day. NOT valid on holidays or with other promotions or groups.



# Junior

## Glenmoor Golf Club Darci Olsen -PGA Professional

9800 South 4800 West

South Jordan, UT 84809

801-280-1742

Par-72 | Yardage-6800 | Slope-127 | Rating-73

UNLIMITED

**\$12 for 9 Holes OR \$20 for 18 Holes. Includes a full bucket of balls with tee time. Good 1 time per day. MUST PRESENT GOLF PASS - JUNIOR MUST HAVE THEIR OWN UTAH PGA GOLF PASS**

Does not include push cart or electric cart rental. Valid Wednesdays 5-17 MON-FRI. Not Valid SAT-SUN-HOLIDAYS (Not valid Wed or Thurs after 2:00 p.m.)

### DRIVING RANGE

Half off of a large bucket of balls.

Valid any time. Valid for ages 17

<input type="checkbox"/>	<input type="checkbox"/>	<input type="checkbox"/>	<input type="checkbox"/>	<input type="checkbox"/>
<input type="checkbox"/>	<input type="checkbox"/>	<input type="checkbox"/>	<input type="checkbox"/>	<input type="checkbox"/>

## Logan River Golf Course Jeffery John - PGA Professional

550 West 1000 North

Logan, UT 84301

888-750-0123

Par-71 | Yardage-6170 | Slope-119 | Rating-68.3

UNLIMITED

**Buy a junior for 18 hole green fee get the one junior 9 or 18 hole green fee FREE.**

Valid Monday before 9:00am June 1-August 31

SPIRITLESS FACILITY - DRESS CODE IN EFFECT

# Junior

## Meadow Brook Golf Course Troy Watkins - PGA Professional

4197 South 1300 West  
Salt Lake City, UT 84123  
385-468-1500

Par-72 | Yardage-6800 | Slope-120 | Rating-70.9

UNLIMITED

Receive a **FREE** junior green fee with each paying adult at the regular rate.

Valid for 9 or 18 holes. Cart rental is mandatory for the junior and adult player. Junior promotion is valid Monday through Friday anytime. Also valid Saturday & Sunday after 3:00pm. Not valid on holidays. Rainchecks will NOT be issued in conjunction with this promotion.

SPIKELESS FACILITY - PRESS CODE IN EFFECT

---

## Mountain View Golf Course Mark Owen -PGA Professional

2400 West 8650 South  
West Jordan, UT 84088  
385-468-1411

Par-72 | Yardage-6745 | Slope-108 | Rating-67.9

UNLIMITED

Junior plays **FREE** with paying adult.

Valid Saturday & Sunday after 3:00pm. Cart rental required.

# Junior

## Mt. Ogden Golf Course Todd Brenkman - PGA Professional

UNLIMITED

1787 Constitution Way

Ogden, UT 84403

801-629-0699

Par-71 | Yardage-6294 | Slope-129 | Rating-69.6

**Junior plays FREE anytime Monday-Thursday with  
paying adult.**

Adult is responsible for green fees and cart fee of \$20.

SPIKE IN FACTORY

## Riverbend Golf Course Steve Young - PGA Professional



12765 South 1040 West

Riverton, UT 84065

385-468-1400

Par-72 | Yardage-6876 | Slope-119 | Rating-69

**\$10 9-hole rate**

**\$20 18-hole rate**

**included. Adult pays regular rates.**

This offer is valid for 9 or 18 holes. Cart rental is mandatory for the junior and adult.  
The junior portion is valid Monday through Thursday anytime, and Saturday and  
Sunday after 2:00 PM. Not valid on holidays.

# Junior

## Schneider's Pebblebrook Golf Course

8969 South 1300 East

Sandy, UT 84070

Tee Times: 801-566-2181



One FREE Junior round with playing adult.

Junior ages (6-17). Valid Monday-Thursday only.

## Schneider's Bluff Golf Course

Jon Schneider, PGA Professional

300 North 3000 West

West Point, UT 84015

801-773-0731

Par-72 | Yardage-6599 | Slope-108 | Rating-67.3



Junior play for only \$6 per 9-holes.

Monday-Thursday from 11:00am-3:00pm. June-August

SHOELESS FACILITY - DRESS CODE IN EFFECT

# Junior

**Sky Mountain Golf Course**  
**Kent Abegglen - PGA Professional**  
1030 North 2600 West  
Hurricane, UT 84737  
435-635-7888  
Par-72 | Yardage-6383 | Slope-115 | Rating 69.9

UNLIMITED

**June - August: \$6 green fee for 18 holes.**  
Valid for Juniors 17 & under. Only valid after 1:30pm.

**South Mountain Golf Course**  
**Dustin Pimm - PGA Professional**  
1247 East Mike Weir Drive  
Draper, UT 84020  
385-468-1414 | Reservations can be made seven days in advance.  
Par 72 | Blue tees 6145 | Slope 126 | Rating 69.4

UNLIMITED

**Receive FREE junior green fee with each paying adult at regular rate. Promotion valid March 1-Oct. 31.**

Promotion is valid for 18 holes. Cart rental is mandatory for adult and junior playing. Junior promotion is valid Monday through Thursday anytime through Sunday after 2pm. Not valid on holidays, group outings or with other promotions. Please call the Pro Shop to book tee time.

# Junior

## Sunset View Golf Course Casey Fowles - PGA Professional

Delta, UT 84624

435-864-2508

Par-72 | Yardage-6415 | Slope-111 | Rating-69.7

Purchase one adult 9 or 18 hole green fee at the regular price and receive a junior 9 or 18 hole green fee FREE.

Must have two players. Carts are mandatory. Valid Monday through Thursday all day.

## Talons Cove Golf Course Kareen Larson - Golf Manager

2220 South Talons Cove Drive

Saratoga Springs, UT 84043

(801) 407-3000

Par-72 | Yardage-6230 | Slope-121 | Rating-71.8

ONE junior green fee with one paying regular adult fee.

Limited to one junior per visit. Valid Monday-Thursday after 11:00am.

Not valid on Fridays and weekends.

SPIKELESS FACILITY

# Junior

Thanksgiving Point Golf Course  
Tele Wightman - PGA Professional  
3300 West Clubhouse Drive  
Lehi, UT 84043  
801-768-7401  
thanksgivingpoint.com  
Par-72 | Yardage-6784 | Slope-129 | Rating

UNLIMITED

Juniors under 15 can play for free with a paying adult  
after 3:00pm any day of the week.

---

Did you know...

100% of the proceeds from the  
Utah PGA Golf Pass go to Junior  
Golf Programs in Utah? Thank you  
for your support!



UTAH

LESSON SECTION



**Mt. Ogden Golf Course**  
**Todd Brenkman - PGA Professional**  
1787 Constitution Way  
Ogden, UT 84403  
801-629-0694 (for appointments)

**UNLIMITED**

**Individual Lessons**

45 Min. Lesson - \$65

Range balls are included in lesson fee

---

**Schneider's Pebblebrook Golf Course**  
**Gary Schneider - PGA Professional**  
8969 South 1300 East  
Sandy, UT 84070  
801-633-2661



**Individual 60 Minute Lesson**

**Receive a \$10 discount**

Offer valid only for Gary Schneider, "The Golf Doctor" only.

JUNIOR SERIES



PGA<sup>TM</sup>

OF AMERICA



19

LITAN



**Scan Here**

For More Information

